

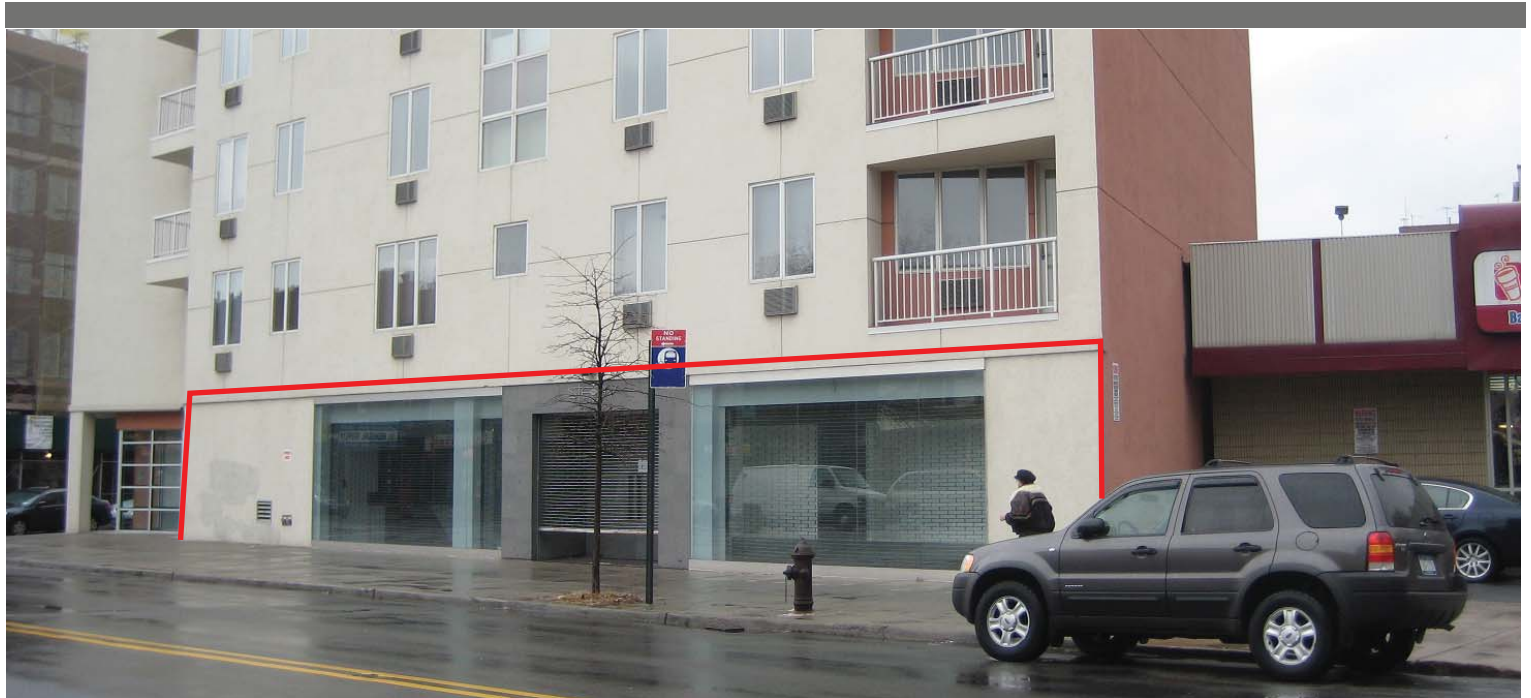
355 Kings Highway - For Lease

Brooklyn, NY 11223 - Gravesend

Retail Space For Lease



Retail Leasing



Location: NE Corner of W. 4th St & Kings Hwy

Ground Floor Size: 8,990 SF (approx)

Dimensions: 90' x 122' (irreg.) (approx.)

Frontage: 90' on Kings Hwy
48' on W. 4th St

Ceiling Heights: 9 FT (approx.)

Zoning: R7A/C2-3

RE Taxes: \$3,100 (08/09)

CAM: \$8,520 per year

Ground Floor Rent: \$30 PSF

TRANSPORTATION

🅓 & 🅕 trains stop within 4 short blocks
B82 service on Kings Hwy

NEIGHBORING TENANTS

Dunkin Donuts, Key Food, Bank of America, HSBC,
PC Richard & Son

FEATURES

- Gut renovated retail condo with over \$1,000,000 in recent improvements with new water heater and air conditioning unit
- Kings Highway N-stop ranked one of New York's fastest growth in subway ridership over past 10 years
- Willing to divide
- Corner location provides access from 2-streets

For Further Information, Please Contact Exclusive Leasing Team:

Timothy D. King
Principal
tking@cpexre.com

Ryan P. Condren
Associate Director
rcondren@cpexre.com

Eric G. Altschul
Associate Director
ealtschul@cpexre.com

CPEX Real Estate | 350 Livingston Street, 1st Fl, Brooklyn NY 11217 | Tel: (718) 935-1800 | Fax: (718) 935-1822

WWW.CPEXRE.COM

All information contained herein was provided by or obtained from the owner of the property or from sources that we deem reliable. Though we have no reason to doubt the validity of the information, we do not warrant any information disclosed. All measurements of area and dimensions, zoning and uses must be independently verified. IT IS STRONGLY URGED THAT THE PROSPECTIVE TENANT CAREFULLY VERIFY EACH ITEM OF SIZE, RE TAXES, PERMITTED LEGAL USE AND ALL OTHER INFORMATION HEREIN.