

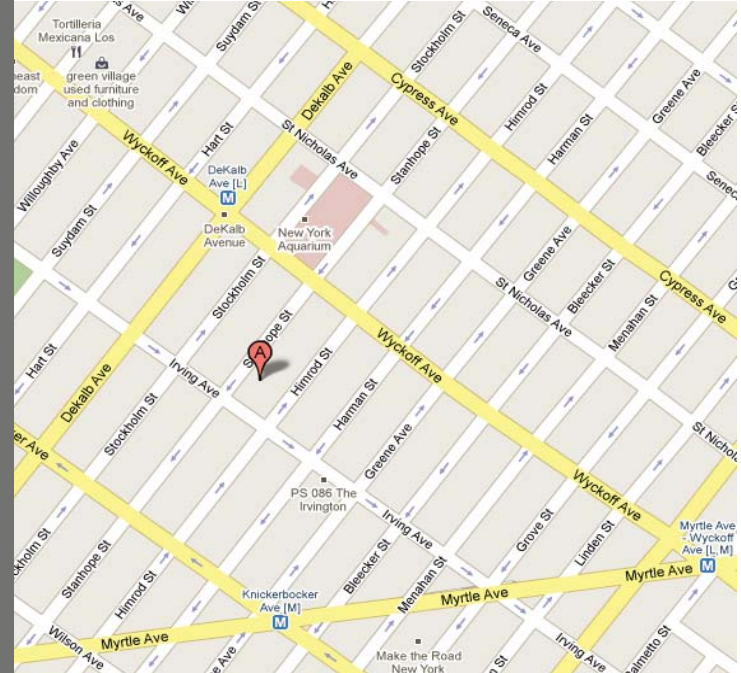
286 Stanhope Street

Brooklyn, NY 11237

Medical/Community-Use Space For Lease



Office Leasing



Location: Between Wyckoff Ave & Irving Ave

Office 1: Ground Floor Size - 1,150 SF
Lower Level - 4,800 SF

Office 2: Ground Floor Size - 420 SF

Frontage: 28 FT

Lot Dimensions: 75' x 100' (approx)

Parking/Rear Yard: 3,750 SF

Asking Rents: Upon Request

TRANSPORTATION

- 🅁 train at DeKalb Ave located at the end of the block
- 🅂 train at Knickerbocker Ave located 4 blocks away
- B13 servicing Wyckoff Ave 1 block away
- B38 servicing DeKalb Ave 2 blocks away

NEIGHBORING TENANTS

Wyckoff Heights Medical Center, US Post Office, PS 86 Subway, Dunkin Donuts, Baskin Robbins, C-Town Foods

FEATURES

- 360,000 SF hospital down the block from site with over 1,800 staff and thousands of daily visitors
- Located on the same block as subway entrance
- Over 2.75 MILLION annual subway transfers at train stop
- Potential for up to 12 parking spaces or outdoor space in rear of building

For Further Information, Please Contact Exclusive Agents:

Timothy D. King
Principal
tking@cpexre.com

Eric G. Altschul
Associate Director
ealtschul@cpexre.com

Ryan P. Condren
Associate Director
rcondren@cpexre.com

WWW.CPEXRE.COM

CPEX Real Estate | 350 Livingston Street, 1st Fl, Brooklyn NY 11217 | Tel: (718) 935-1800 | Fax: (718) 935-1822

All information contained herein was provided by or obtained from the owner of the property or from sources that we deem reliable. Though we have no reason to doubt the validity of the information, we do not warrant any information disclosed. All measurements of area and dimensions, zoning and uses must be independently verified. IT IS STRONGLY URGED THAT THE PROSPECTIVE TENANT CAREFULLY VERIFY EACH ITEM OF SIZE, RE TAXES, PERMITTED LEGAL USE AND ALL OTHER INFORMATION HEREIN.

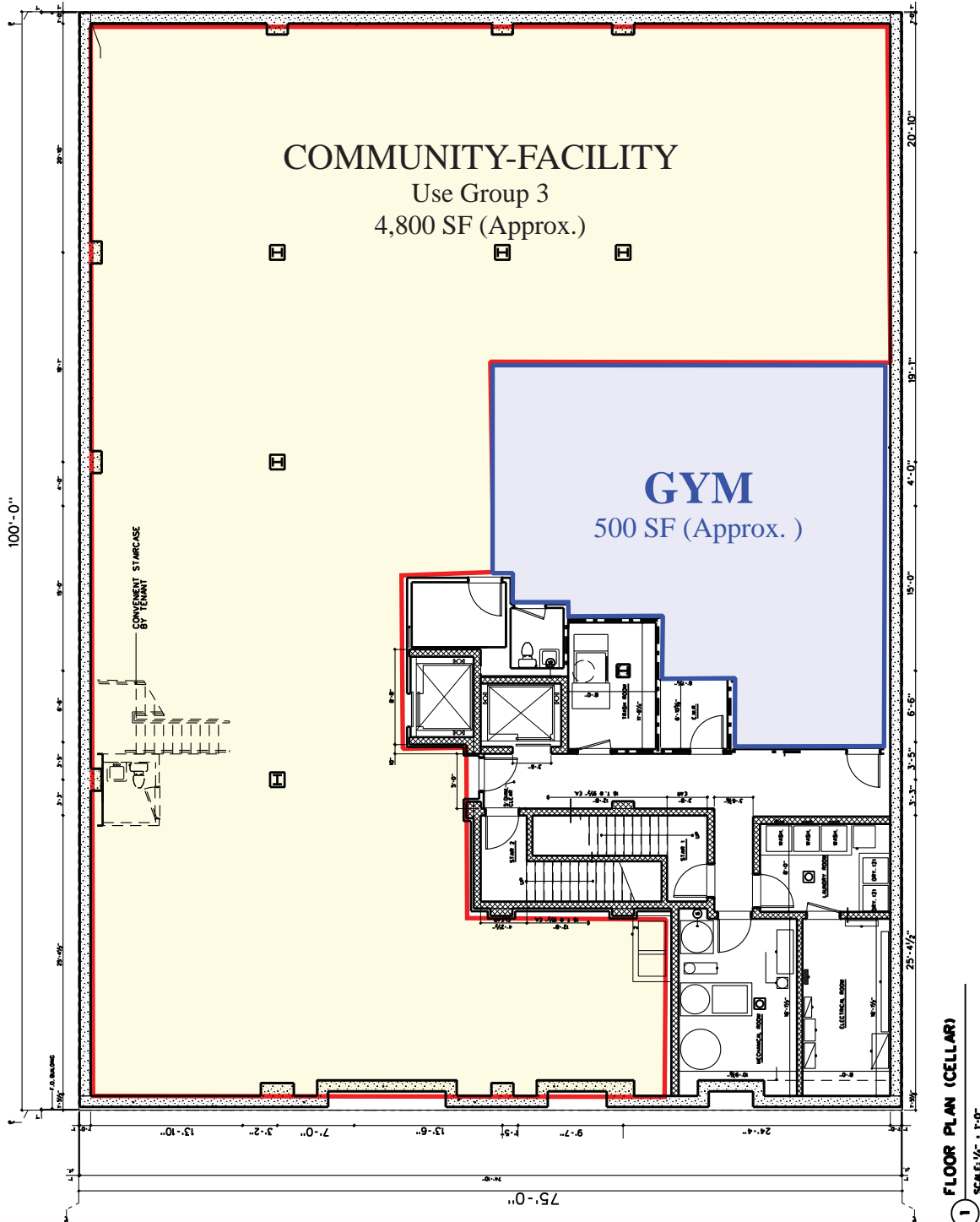
286 Stanhope Street

Brooklyn, NY 11237

Lower Level Floor Plan



Office Leasing



WWW.CPEXRE.COM

CPEX Real Estate | 350 Livingston Street, 1st Fl, Brooklyn NY 11217 | Tel: (718) 935-1800 | Fax: (718) 935-1822

All information contained herein was provided by or obtained from the owner of the property or from sources that we deem reliable. Though we have no reason to doubt the validity of the information, we do not warrant any information disclosed. All measurements of area and dimensions, zoning and uses must be independently verified. IT IS STRONGLY URGED THAT THE PROSPECTIVE TENANT CAREFULLY VERIFY EACH ITEM OF SIZE, RE TAXES, PERMITTED LEGAL USE AND ALL OTHER INFORMATION HEREIN.