

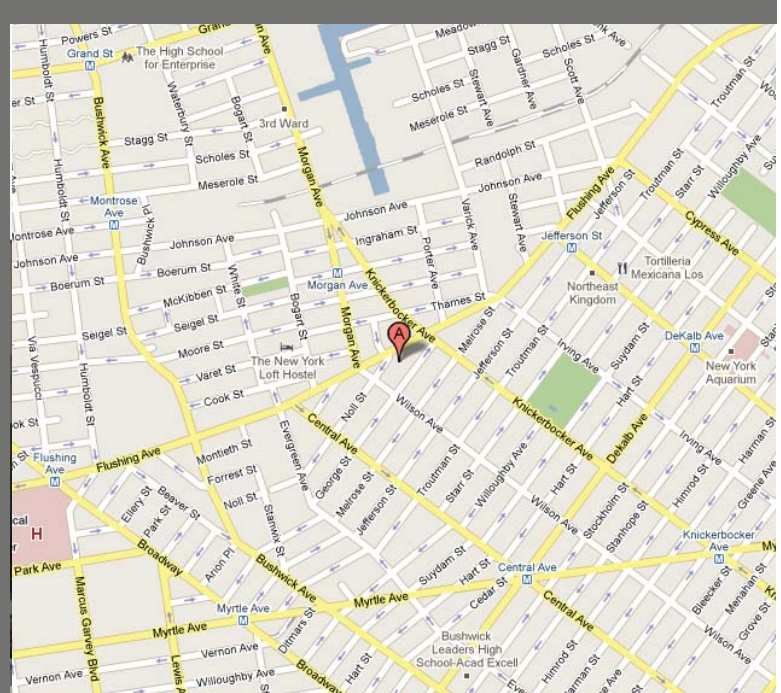
184 Noll Street

Brooklyn, NY 11237 - Bushwick

Medical/Community-Use Space For Lease



Office Leasing



Location: Between Flushing Ave & Wilson Ave

Ground Floor Size: 5,000 SF (approx.)

Frontage: 43 FT

Lot Dimensions: 75' x 100' (approx)

Parking: Up to 16 underground spaces

Real Estate Taxes: Pro Rata Share

Available: March 2010

Asking Rent: \$10,000 per month

TRANSPORTATION

- L train at Morgan Ave located 3 blocks away
- B13 & B57 servicing Flushing Ave 1/2 block away
- B60 servicing Wilson Ave 1 block away

FEATURES

- Perfect for medical space, MRI center, not-for-profits, schools, religious organizations
- Less than 1 mile from both Wyckoff Heights Medical Center and Woodhull Medical and Mental Health Center
- 5 minute walk to Bushwick Park
- New Construction allows for flexible layouts

For Further Information, Please Contact Exclusive Agents:

Timothy D. King
Principal
tking@cpexre.com

Eric G. Altschul
Associate Director
ealtschul@cpexre.com

Ryan P. Condren
Associate Director
rcondren@cpexre.com

WWW.CPEXRE.COM

CPEX Real Estate | 350 Livingston Street, 1st Fl, Brooklyn NY 11217 | Tel: (718) 935-1800 | Fax: (718) 935-1822

All information contained herein was provided by or obtained from the owner of the property or from sources that we deem reliable. Though we have no reason to doubt the validity of the information, we do not warrant any information disclosed. All measurements of area and dimensions, zoning and uses must be independently verified. IT IS STRONGLY URGED THAT THE PROSPECTIVE TENANT CAREFULLY VERIFY EACH ITEM OF SIZE, RE TAXES, PERMITTED LEGAL USE AND ALL OTHER INFORMATION HEREIN.

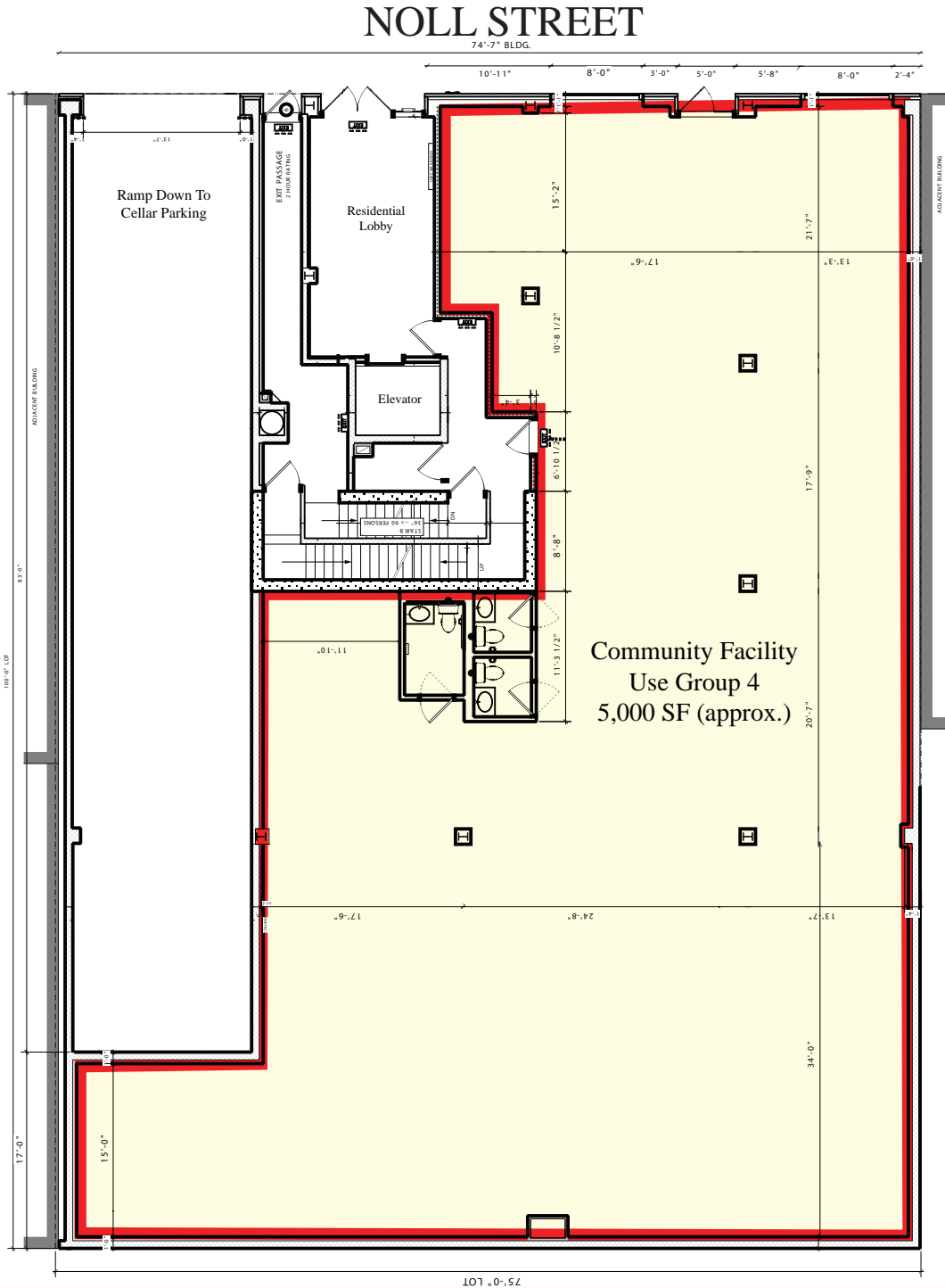
184 Noll Street

Brooklyn, NY 11237

Community-Use Floor Plan



Office Leasing



WWW.CPEXRE.COM

CPEX Real Estate | 350 Livingston Street, 1st Fl, Brooklyn NY 11217 | Tel: (718) 935-1800 | Fax: (718) 935-1822

All information contained herein was provided by or obtained from the owner of the property or from sources that we deem reliable. Though we have no reason to doubt the validity of the information, we do not warrant any information disclosed. All measurements of area and dimensions, zoning and uses must be independently verified. IT IS STRONGLY URGED THAT THE PROSPECTIVE TENANT CAREFULLY VERIFY EACH ITEM OF SIZE, RE TAXES, PERMITTED LEGAL USE AND ALL OTHER INFORMATION HEREIN.