

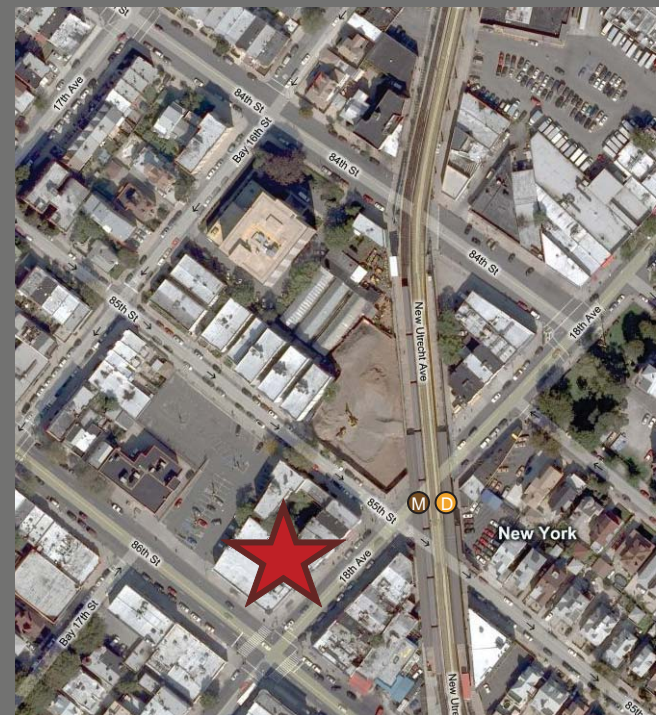
8514 18th Avenue

Retail Space For Lease

Brooklyn, NY 11214 - Bensonhurst



Retail Leasing



Location: 86th St & New Utrecht Ave
Total Retail Size: 22,900 SF (approx.)
Ground Floor Size: 5,850 SF (approx)
Lower Level: 5,850 SF (approx.)
2nd Floor: 11,200 SF (approx.)
Frontage: 47 FT (approx.)
Dimensions: 47' x 112' (approx) (irreg)
Zoning: C1-2/R5
RE Taxes: \$25,933 (08/09)
Ground Floor Rent: Upon Request

TRANSPORTATION

M **D** at 18th Avenue - 1.5 Million transfers annually
B1 & B8 bus lines stop directly in front of building

NEIGHBORING TENANTS

Sovereign Bank, CVS, Dunkin Donuts, Marshalls

FEATURES

- Adjacent to municipal parking lot with over 100 spaces
- Frontage on 18th Ave and 86th Street
- Located on same block as D- & M-train station at 18th Ave
- Easy access to Belt Parkway
- Building at corner of 2 2-way streets
- Willing to divide space

WWW.CPEXRE.COM

For Further Information, Please Contact Exclusive Leasing Team:

Timothy D. King
Principal
tking@cpexre.com

Ryan P. Condren
Associate Director
rcondren@cpexre.com

Eric G. Altschul
Associate Director
ealtschul@cpexre.com

CPEX Real Estate | 350 Livingston St, 1st Fl, Brooklyn NY 11217 | Tel: (718) 935-1800 | Fax: (718) 935-1822

All information contained herein was provided by or obtained from the owner of the property or from sources that we deem reliable. Though we have no reason to doubt the validity of the information, we do not warrant any information disclosed. All measurements of area and dimensions, zoning and uses must be independently verified. IT IS STRONGLY URGED THAT THE PROSPECTIVE TENANT CAREFULLY VERIFY EACH ITEM OF SIZE, RE TAXES, PERMITTED LEGAL USE AND ALL OTHER INFORMATION HEREIN.