

200 Livingston Street

Retail Space For Lease

Brooklyn NY 11201 - Downtown Brooklyn/Boerum Hill



Retail Leasing



Livingston Street Entrance

Location: Between Hoyt St & Smith St

Retail 1: 5,489 SF (76 ft frontage)

Retail 2: 4,435 SF (40 ft frontage)

Retail 3: 4,760 SF (60 ft frontage)

Ceiling Heights: 12' - 17'5" (approx)

Parking: 176 public spaces below (approx)

Taxes: Enhanced taxes from 421-A Abatement

Available: November 2008

Rent: Upon Request

TRANSPORTATION

2 3 4 5 R Q M B A C G within 1/4 mi

NEIGHBORING TENANTS

MACY'S, IHOP, Dallas BBQ, Banco Popular, Fulton Street Mall, Jennifer Convertible, Sleepy's

FEATURES

- Potential for frontage on 2 streets
- Over 26 Million subway transfers annually in 1/4 mi
- 1 block from Fulton Street Mall
- Directly across street from Macy's entrance
- 10 Million SF of Class-A office space in the immediate area

WWW.CPEXRE.COM

For Further Information, Please Contact Exclusive Leasing Team:

Timothy D. King
Principal
tking@cpexre.com

Eric G. Altschul
Associate Director
ealtschul@cpexre.com

Ryan P. Condren
Associate Director
rcondren@cpexre.com

CPEX Real Estate | 350 Livingston Street, 1st Fl, Brooklyn NY 11217 | Tel: (718) 935-1800 | Fax: (718) 935-1822

All information contained herein was provided by or obtained from the owner of the property or from sources that we deem reliable. Though we have no reason to doubt the validity of the information, we do not warrant any information disclosed. All measurements of area and dimensions, zoning and uses must be independently verified. IT IS STRONGLY URGED THAT THE PROSPECTIVE TENANT CAREFULLY VERIFY EACH ITEM OF SIZE, RE TAXES, PERMITTED LEGAL USE AND ALL OTHER INFORMATION HEREIN.

200 Livingston Street

Retail Space For Lease

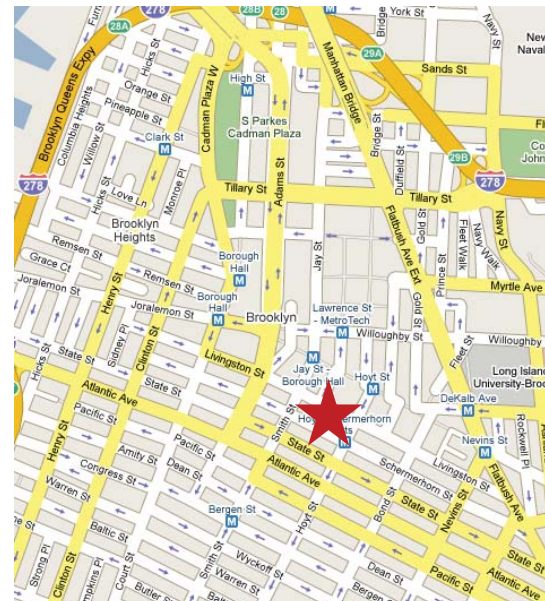
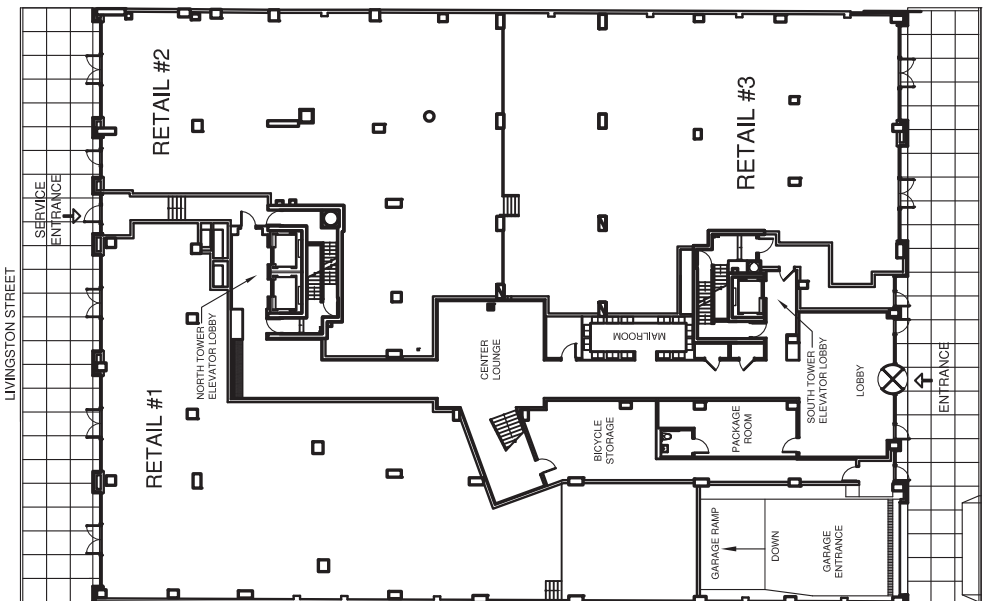
Brooklyn, NY 11201 - Downtown Brooklyn/Boerum Hill



Retail Leasing



Schermerhorn Street Entrance



CPEX Real Estate | 350 Livingston Street, 1st Fl, Brooklyn NY 11217 | Tel: (718) 935-1800 | Fax: (718) 935-1822

All information contained herein was provided by or obtained from the owner of the property or from sources that we deem reliable. Though we have no reason to doubt the validity of the information, we do not warrant any information disclosed. All measurements of area and dimensions, zoning and uses must be independently verified. IT IS STRONGLY URGED THAT THE PROSPECTIVE TENANT CAREFULLY VERIFY EACH ITEM OF SIZE, RE TAXES, PERMITTED LEGAL USE AND ALL OTHER INFORMATION HEREIN.