

111 Livingston Street, 4th Fl

Office Space For Sublease


Brooklyn Heights, Borough Hall, Downtown Brooklyn 11201



Office Leasing



Building & Area Description:

- 24/7 attended lobby
- Full Service Office Building
- Cleaning included
- Wired for high-speed internet
- On-site parking garage and additional parking across street
- Very low loss factor
- 2 blocks from 
- Walking distance to Borough Hall, Municipal Building, 6 Court Houses, New York City Transit Authority Headquarters, Brooklyn Public Library, Internal Revenue Service, District Attorney's office, Post Office, Cadman Plaza, Marriott Hotel, & Fulton Street Mall

Office & Sublease Description:

Office includes: 6 windowed offices, 3 additional offices, large conference room, kitchenette, server/storage room, and reception area

Size: 3,203 RSF (approx.)

Term: 5 years sublet (exp. Feb. 2014)

Rent: \$27.50/RSF (includes new carpet and paint)

Electric: \$2.75/RSF

RE Taxes: Pro Rata Share of Increases

WWW.CPEXRE.COM

For Further Information, Please Contact Exclusive Leasing Team:

Timothy D. King

Principal

tking@cpexre.com

Ryan P. Condren

Associate Director

rcondren@cpexre.com

Eric G. Altschul

Associate Director

ealtschul@cpexre.com

CPEX Real Estate | 350 Livingston Street, 1st Fl, Brooklyn NY 11217 | Tel: (718) 935-1800 | Fax: (718) 935-1822

All information contained herein was provided by or obtained from the owner of the property or from sources that we deem reliable. Though we have no reason to doubt the validity of the information, we do not warrant any information disclosed. All measurements of area and dimensions, zoning and uses must be independently verified. IT IS STRONGLY URGED THAT THE PROSPECTIVE TENANT CAREFULLY VERIFY EACH ITEM OF SIZE, RE TAXES, PERMITTED LEGAL USE AND ALL OTHER INFORMATION HEREIN.

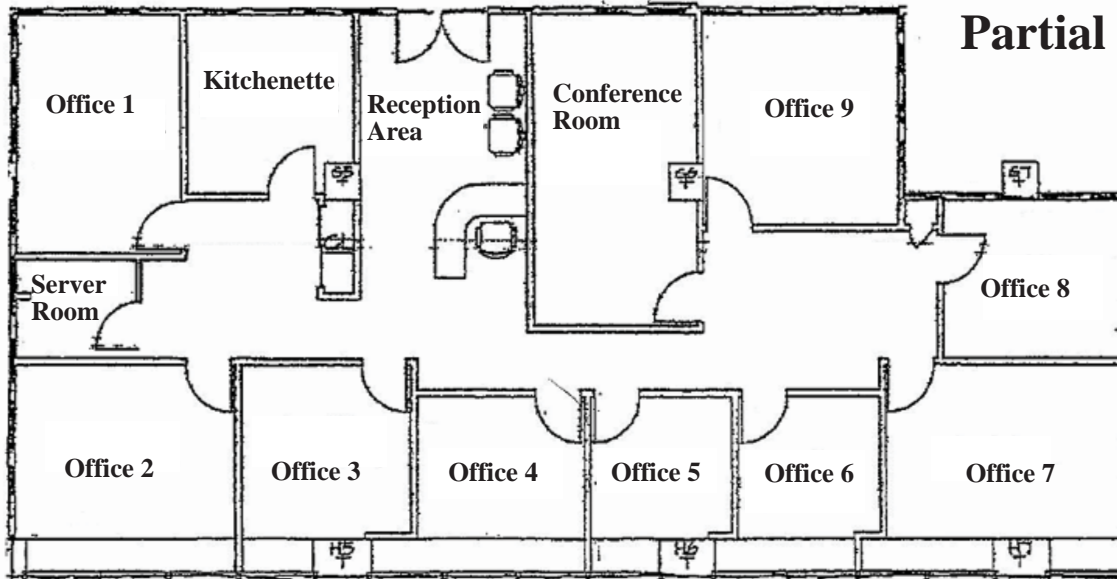
111 Livingston Street, 4th Fl

Office Space For Sublease

Brooklyn, NY 11201 - Brooklyn Heights/Downtown Brooklyn



Office Leasing



WWW.CPEXRE.COM

For Further Information, Please Contact Exclusive Leasing Team:

Timothy D. King
Principal
tking@cpexre.com

Ryan P. Condren
Associate Director
rcondren@cpexre.com

Eric G. Altschul
Associate Director
ealtschul@cpexre.com

CPEX Real Estate | 350 Livingston Street, 1st Fl, Brooklyn NY 11217 | Tel: (718) 935-1800 | Fax: (718) 935-1822

All information contained herein was provided by or obtained from the owner of the property or from sources that we deem reliable. Though we have no reason to doubt the validity of the information, we do not warrant any information disclosed. All measurements of area and dimensions, zoning and uses must be independently verified. IT IS STRONGLY URGED THAT THE PROSPECTIVE TENANT CAREFULLY VERIFY EACH ITEM OF SIZE, RE TAXES, PERMITTED LEGAL USE AND ALL OTHER INFORMATION HEREIN.